



278 MYSTIC AVENUE

MEDFORD, MA

Professional Office Space

NOW AVAILABLE

Prime Office Opportunity
Suites From 1,628 SF - 5,087 SF
Second Floor

Description

- Second Floor Professional Office Suite
- Open Floor Plan with Extensive Sun Light
- Free Surface Parking
- Ceiling up to 9'
- Great Highway Access

Location

Located in Medford's commercial business district at the intersection of I-93, Routes 38, and 16, in the heart of Greater Boston's Inner Belt:

- 5 minutes to downtown Boston
- 5 minutes to Cambridge
- 5 minutes to I-90 and I-95
- 1/2 mile to Medford Square
- On MBTA bus route with connection to the Orange Line T
- Near MIT, Tufts, Harvard and other major research universities
- Highway visibility possible from I-93



LOCATION
CONVENIENCE
VALUE



Corporate Neighbors

Bank of America | Century Bank | Verizon | CorePower Yoga | AutoZone | Dunkin Donuts | Sherwin Williams | Edible Arrangements | Jiffy Lube | Johnstone Supply | NorthEast Electrical | Dunkin Donuts | Burger King



278 MYSTIC AVENUE

MEDFORD, MA

Professional Office Space



SPECIFICATIONS

Excellent Location for Professional Office Space

Address:	278 Mystic Ave Medford MA, 02155	Roof:	Rubber Membrane
Available:	Suites From 1,628 SF - 5,087 SF Second Floor	Construction:	Steel Frame
Parking:	Extensive Free and Covered Parking	Electricity:	National Grid
Exterior:	Brick, Stone, Steel	Water & Sewer:	City of Medford
Ceiling Height:	9'-0"	HVAC:	Individually Controlled
		Natural Gas:	National Grid
		Tel/Data:	Fiber Available

CP
COMBINED PROPERTIES

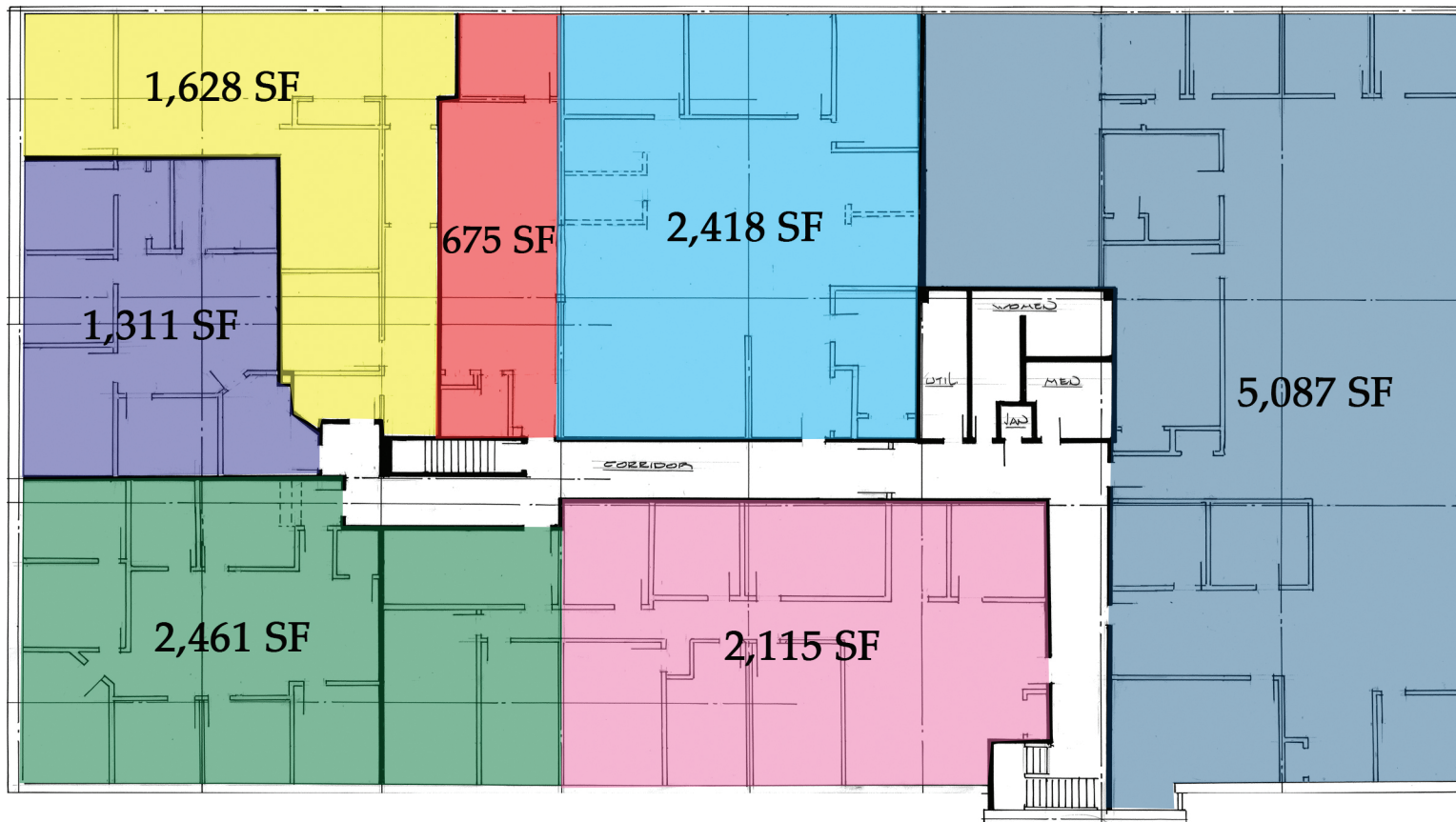
Since 1935

Contact

Greg Regazzini, SVP, Director of Leasing
gregazzini@combinedproperties.com
ph: 781.321.7800, ext. 318
fax: 781.321.5144
www.combinedproperties.com

Creating Better Places to Live, Work and Play.®

Second Floor



Not to Scale | For Illustrative Purposes Only

278 Mystic Avenue
Medford, MA

Second Floor Suites From:
1,628 SF - 5,087 SF

Building Total: 21,776 SF



CP
COMBINED PROPERTIES®

Since 1935

*Creating Better Places to Live,
Work and Play.®*