



NOW AVAILABLE

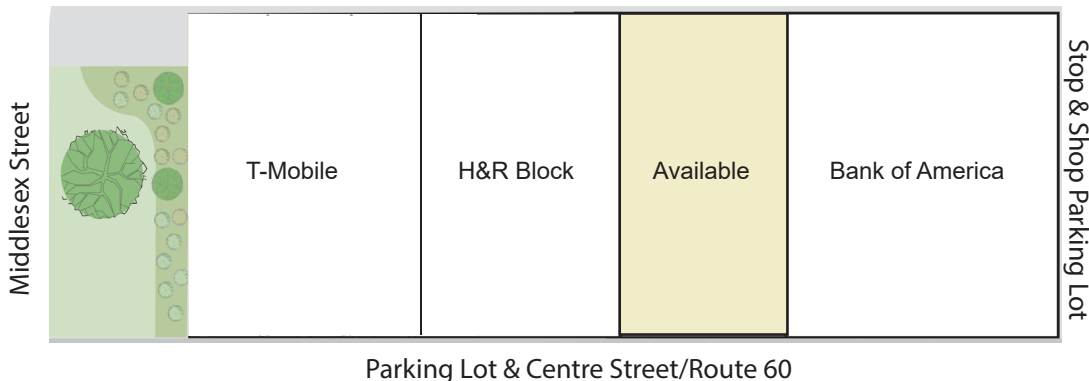
1,791 SF | Available

Description

One of Malden's most coveted retail spaces is available! In the heart of Malden's Central Business District, this exceptionally located in-line space shares a power center with H&R Block, T-Mobile, and Bank of America, and is next door to Malden's busy Super Stop & Shop. Most recently a Radio Shack, the property is ideal for a national technology service provider.

This highly visible suite has direct frontage on busy Centre St./Route 60 where 25,000+ cars pass daily. Ample parking is available on-site and two public parking garages are directly across the street.

155 Centre Street is in the heart of Malden's CBD



Neighbors: Super Stop & Shop | Dunkin' Donuts | Bank of America | H&R Block | T-Mobile | Walgreens | People's Bank United | CVS Pharmacy | AT&T | Verizon | Jay's Ice Cream



MALDEN'S CENTRAL BUSINESS DISTRICT



LOCATION | CONVENIENCE | VALUE

Creating Better Places to Live, Work and Play.

Demographics

- 25,000 daily car count on Route 60/Centre St.
- 12,000 commuters daily at the nearby Orange Line T-station
- Walk Score: 95
- Population | 2019: 46,004 (1 mile), 269,942 (3 miles), 689,162 (5 miles)
- Households | 2019: 18,210 (1 mile), 105,476 (3 miles), 285,871 (5 miles)
- Median Household Income | 2019: \$61,919 (1 mile), \$68,750 (3 miles), \$81,235 (5 miles)

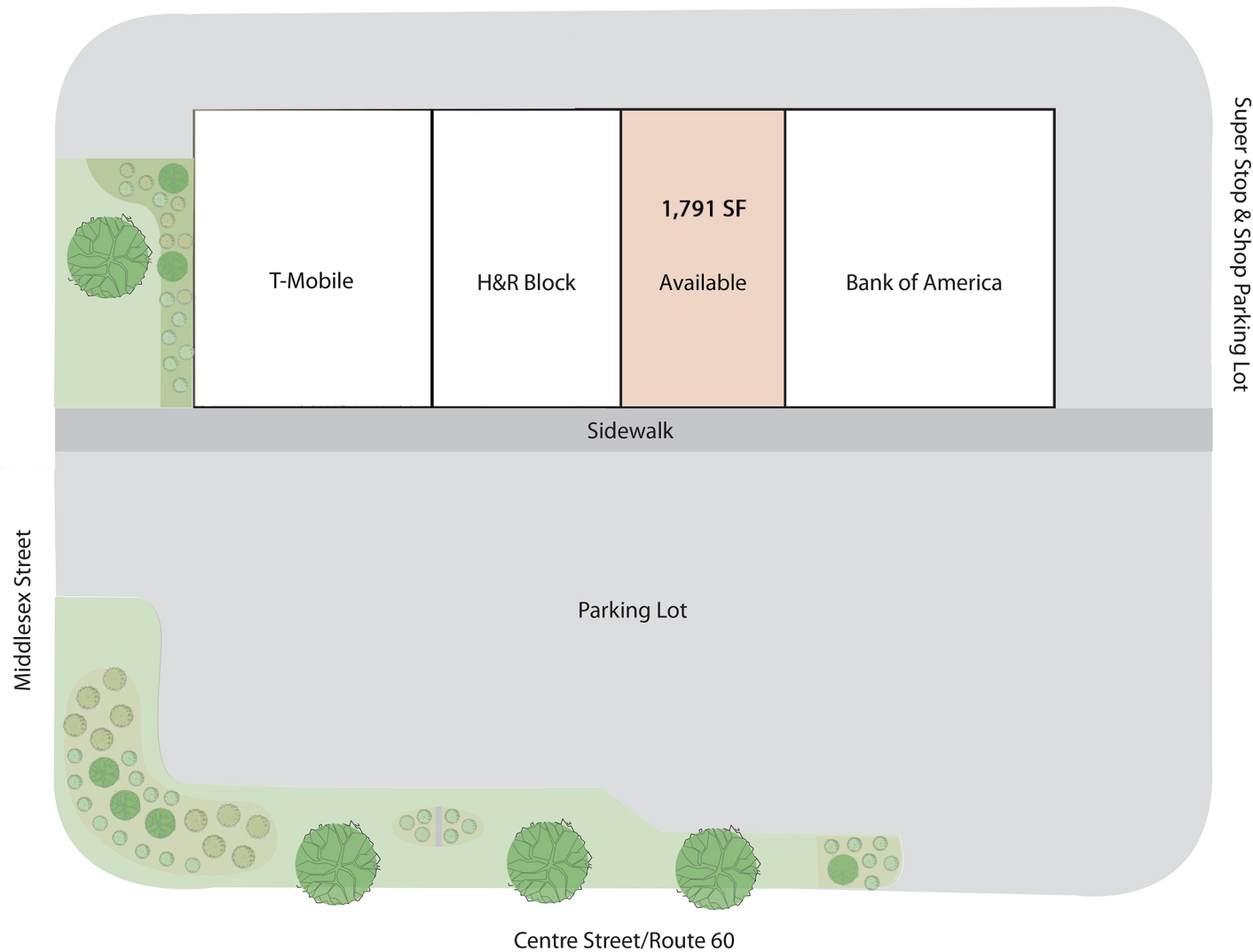
Specifications

Address:	155 Centre Street, Malden, MA	HVAC:	Gas heat;
Available:	1,791 SF		Electric A/C
Total Building:	9,967 SF		4.5 tons
Frontage:	30 'W X 60' D	Gas Service:	NGrid
Parking:	43 spaces for building	Water & Sewer:	City of Malden
Fire Prevent.:	Wet sprinkler		

Contact

Greg Regazzini, SVP, Director of Leasing
 gregazzini@combinedproperties.com
 ph: 781.321.7800, ext. 318
 www.combinedproperties.com

Site Plan



Not to Scale | For Illustrative Purposes Only

**155 CENTRE STREET
MALDEN, MA**

Available: 1,791 SF

Total Building: 9,967 SF

 **Space Available**

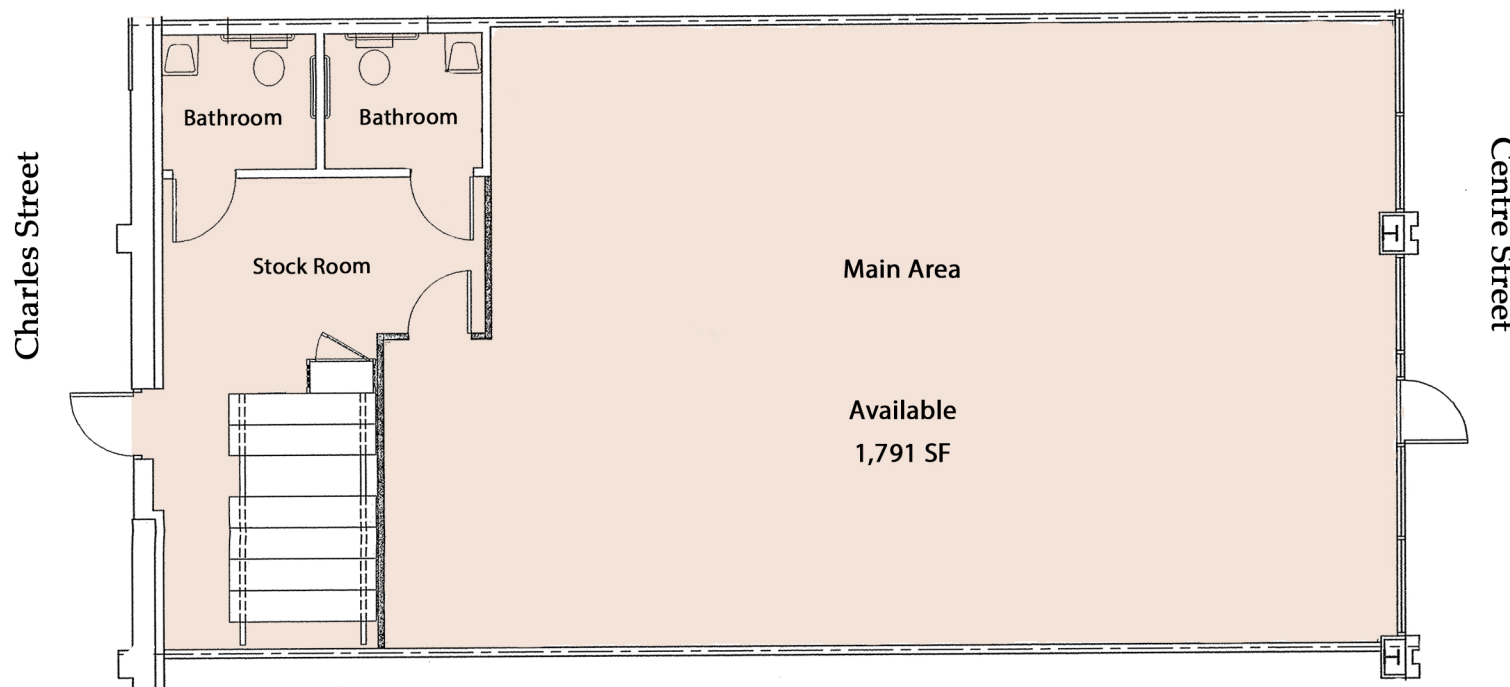


CP
COMBINED PROPERTIES

Since 1935

*Creating Better Places to Live,
Work and Play.*

Floor Plan



**155 CENTRE STREET
MALDEN, MA**

**Available: 1,791 SF
Total Building: 9,967 SF**

 **Space Available**



CP
COMBINED PROPERTIES

Since 1935

*Creating Better Places to Live,
Work and Play.*